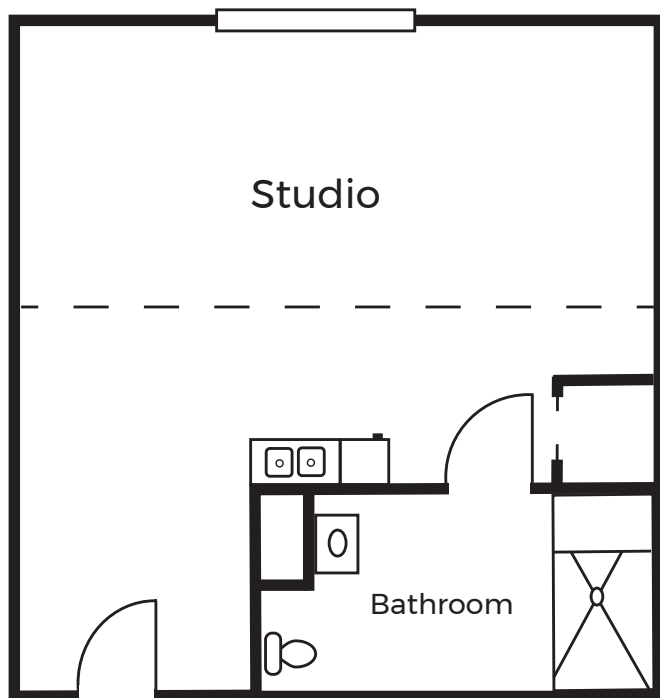


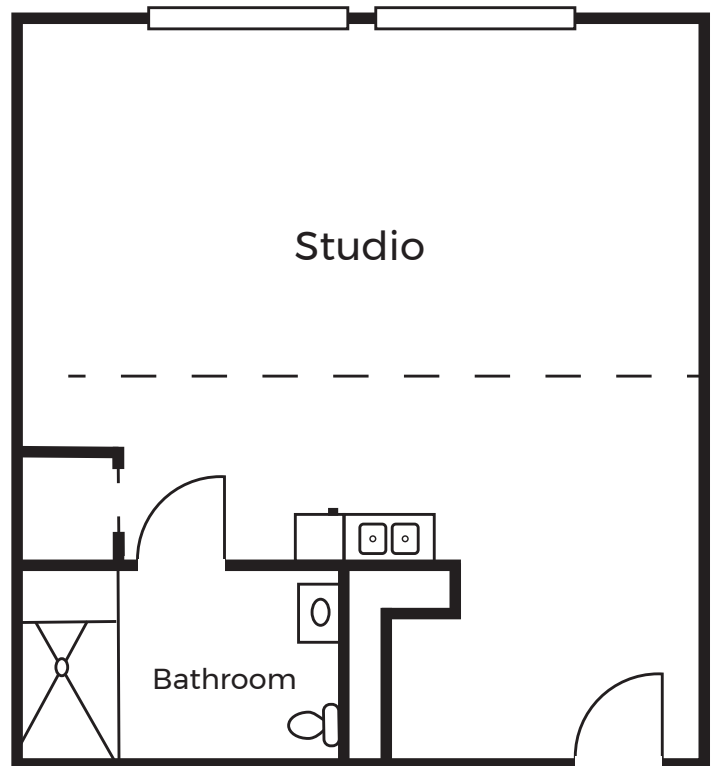
Floor Plans



STUDIO
269 sq. ft. (approx)



DELUXE STUDIO
327 sq. ft. (approx)



AVAMERE
at South Hill

3078 E 57th Ave. Spokane, WA 99223
P: 509-443-0401
AvamereAtSouthHill.com



The Avamere Family of Companies complies with applicable federal civil rights laws and does not discriminate on the basis of race, color, national origin, age, sex, or disability in admissions, treatment, or participation in its programs, services, activities or employment practices.

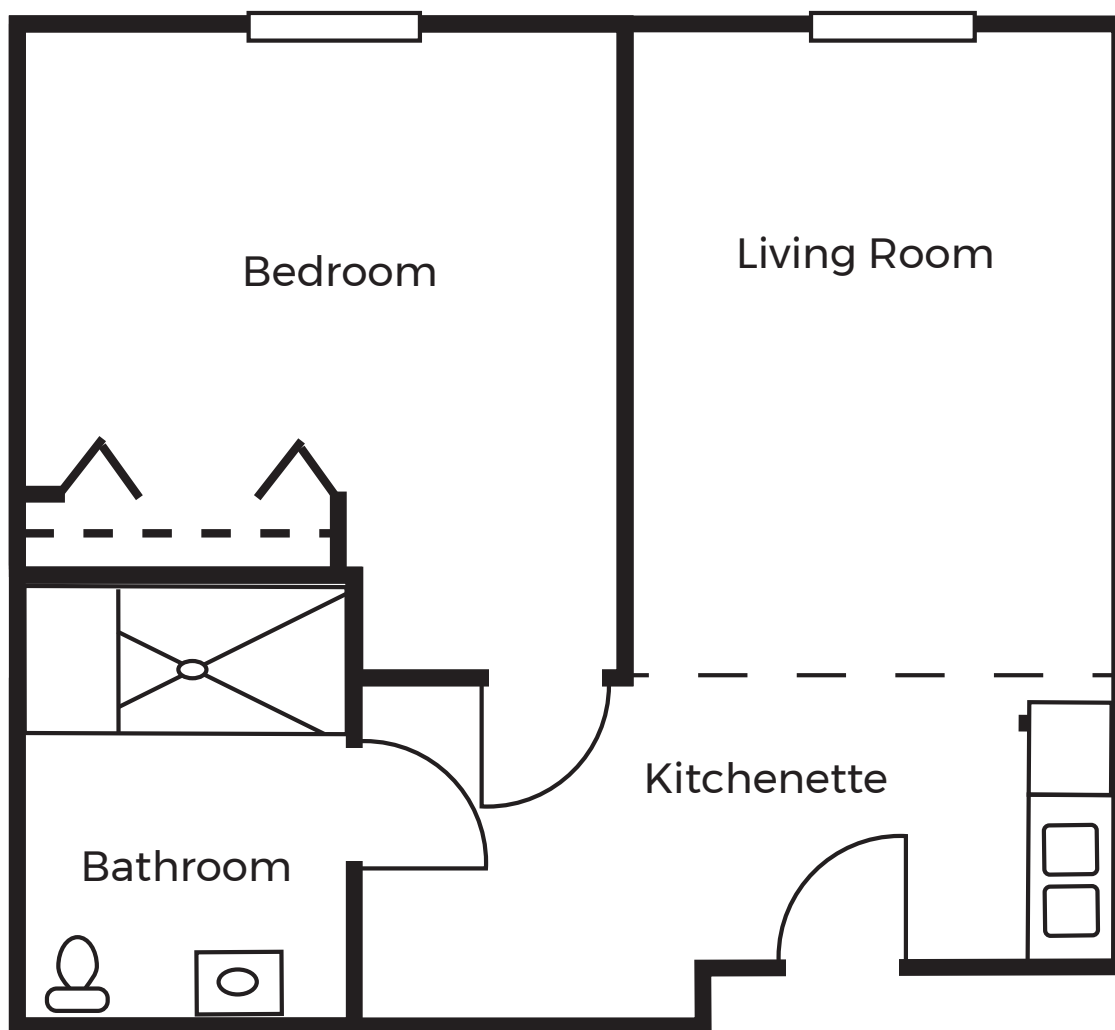
Floor Plans



ASSISTED
LIVING

1 BEDROOM 1 BATH

466 sq. ft. (approx)



AVAMERE
at South Hill

3078 E 57th Ave. Spokane, WA 99223

P: 509-443-0401

AvamereAtSouthHill.com



The Avamere Family of Companies complies with applicable federal civil rights laws and does not discriminate on the basis of race, color, national origin, age, sex, or disability in admissions, treatment, or participation in its programs, services, activities or employment practices.

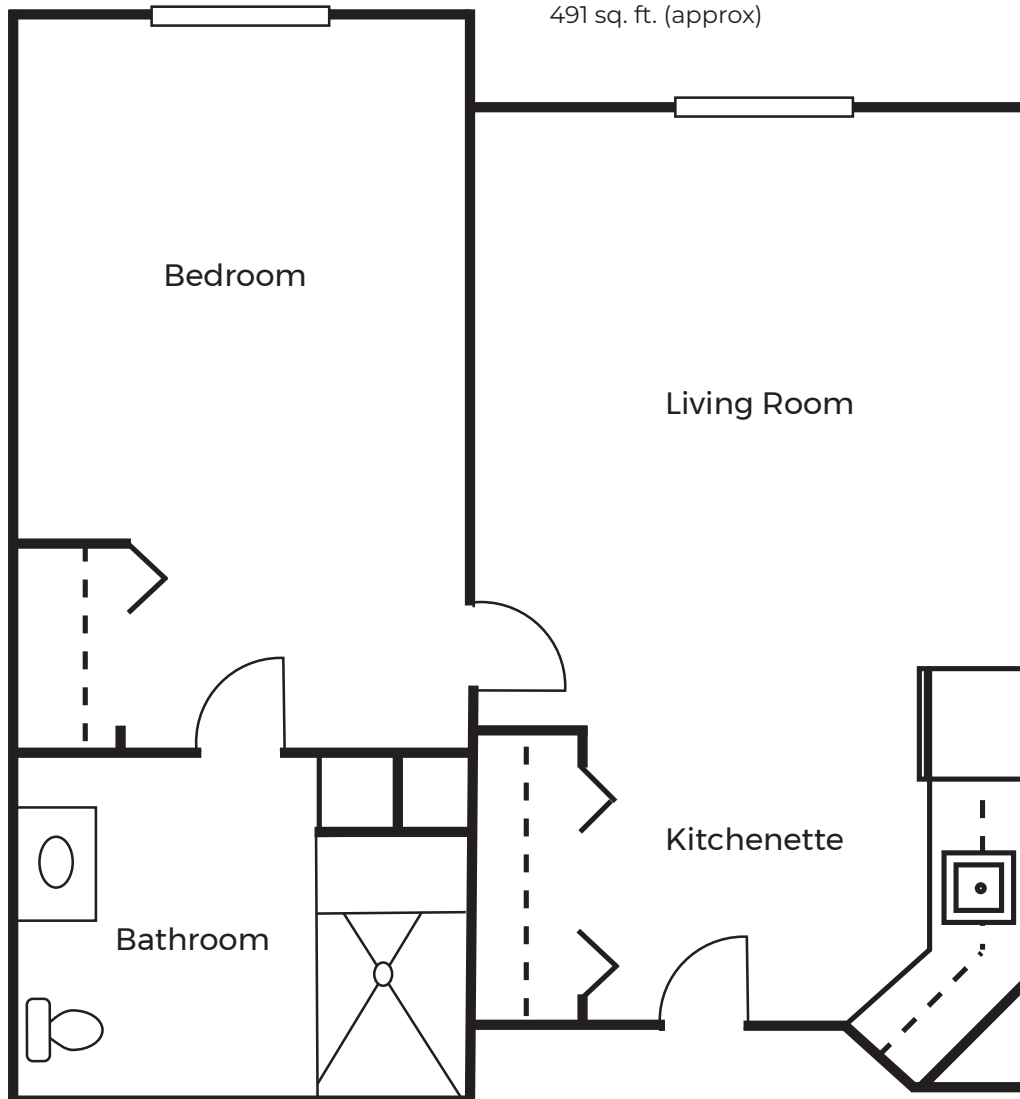
Floor Plans



ASSISTED
LIVING

1 BEDROOM 1 BATH

491 sq. ft. (approx)



AVAMERE
at South Hill

3078 E 57th Ave. Spokane, WA 99223

P: 509-443-0401

AvamereAtSouthHill.com

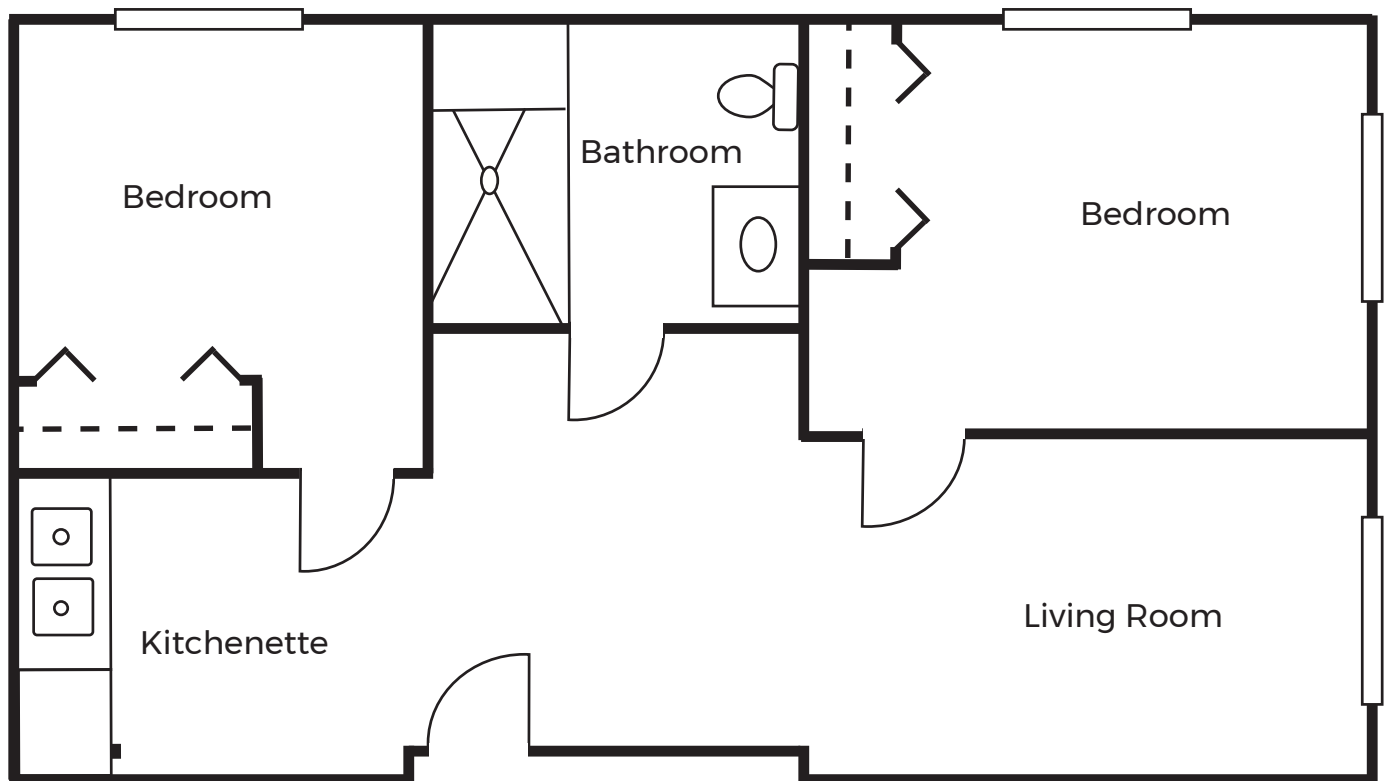


The Avamere Family of Companies complies with applicable federal civil rights laws and does not discriminate on the basis of race, color, national origin, age, sex, or disability in admissions, treatment, or participation in its programs, services, activities or employment practices.

Floor Plans



2 BEDROOM 1 BATH 592 sq. ft. (approx)



AVAMERE
at South Hill

3078 E 57th Ave. Spokane, WA 99223

P: 509-443-0401

AvamereAtSouthHill.com



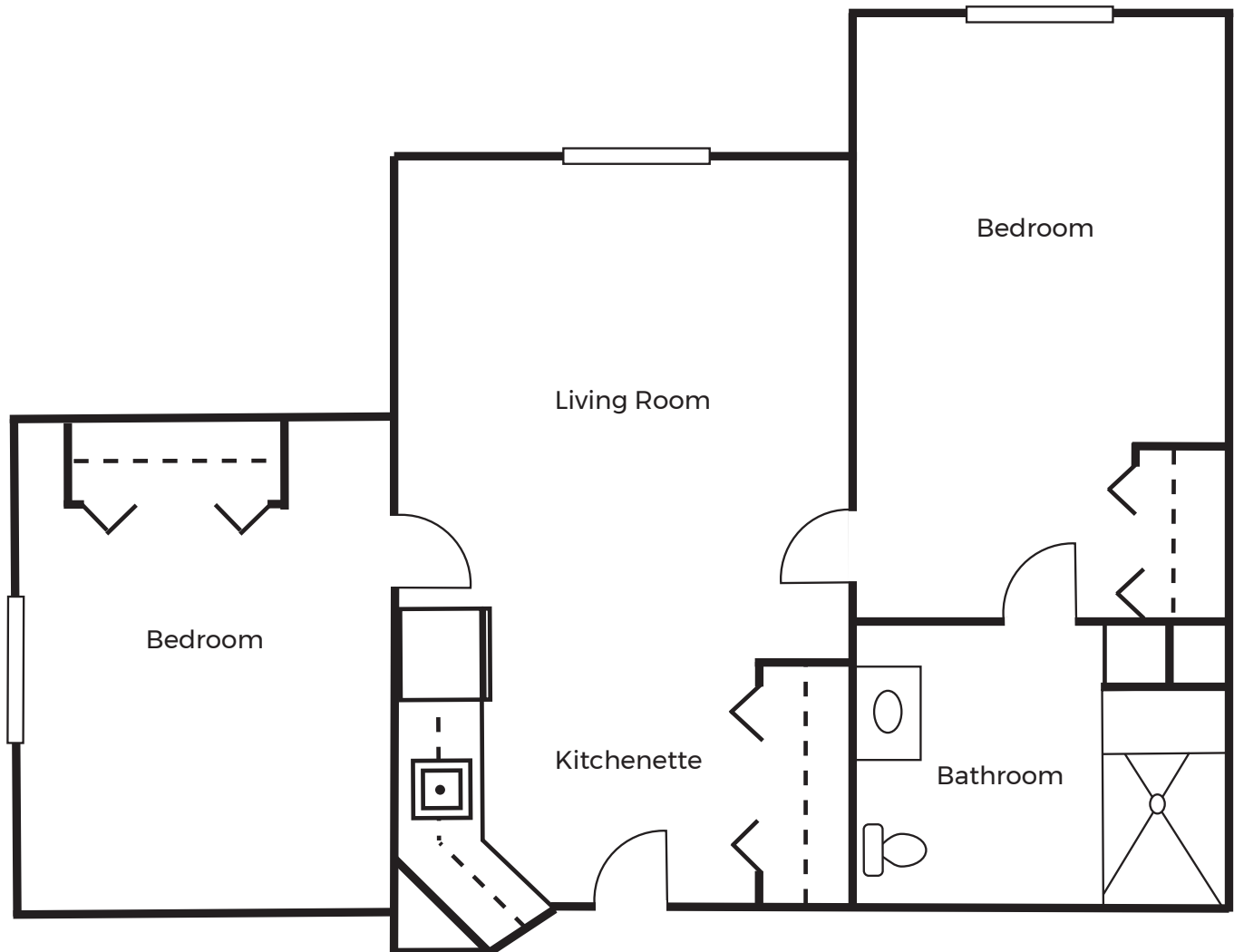
The Avamere Family of Companies complies with applicable federal civil rights laws and does not discriminate on the basis of race, color, national origin, age, sex, or disability in admissions, treatment, or participation in its programs, services, activities or employment practices.

Floor Plans



2 BEDROOM 1 BATH

650 sq. ft. (approx)



AVAMERE
at South Hill

3078 E 57th Ave. Spokane, WA 99223

P: 509-443-0401

AvamereAtSouthHill.com



The Avamere Family of Companies complies with applicable federal civil rights laws and does not discriminate on the basis of race, color, national origin, age, sex, or disability in admissions, treatment, or participation in its programs, services, activities or employment practices.